

TRACHI-NAZE®

hands free valve



LOOK AT THE Benefits!

- ✓ **RESTORES** confidence in communicating & respiratory rehabilitation
- ✓ **INCREASES** comfort with its low profile design and adjustability
- ✓ **DELIVERS** hands free speech
- ✓ **MAXIMISES** the benefits of better breathing

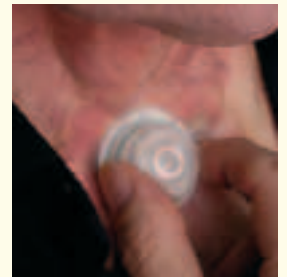


KAPITEX®
The Specialists in Laryngectomy,
Tracheostomy, Dysphagia and
Airway Management

Giving you the best in hands free speech and breathing!

The latest addition to the *Trachi-Naze* family of products is the *Trachi-Naze Hands Free Valve*.

- ✓ The *Trachi-Naze* Hands Free Valve removes the need to place finger or thumb over the stoma during speech - the valve diverts air automatically through the voice prosthesis into the throat.
- ✓ Easily and fully adjustable - a wide range of sensitivity settings (diaphragm closure) to give you the best choice of comfort and convenience at all levels of activity.
- ✓ When combined with the *Trachi-Naze* and *Trachi-Naze Plus* multi function filter cassettes it gives you the best in Hands Free speech and breathing!
- ✓ *Trachi-Naze* is the **only** system clinically proven to increase oxygenation and therefore improve respiration.
- ✓ Dedicated to the *Trachi-Naze* and *Trachi-Naze Plus* range of baseplates and stoma studs.
- ✓ Simple and easy to attach, adjust and use!
- ✓ Can be used with all leading brands of voice prosthesis
- ✓ Featuring the unique patented diaphragm bellows*.



The Hands Free Valve features a Cough Release Valve to release build up of pressure and ratchet/click points enable adjustment to the desired setting.



Attachment to the *Trachi-Naze* system is easy with a wide choice of baseplates (above) and stoma studs (below), giving the highest opportunity of best fit.



The *Trachi-Naze* system gives you the confidence to lead the life you want to live.



simple and easy to attach, adjust and use!



TRACHI-NAZE®...performance that makes a real difference!

1. Over Pressure Release Valve

2. Top Cap

3. Diaphragm (Bellows)

4. Housing

5. Special Occlusion Cap

Product Code:
LA TNV 1001

The component parts of the Trachi-Naze Hands Free Valve.

Please Note : Components are NOT supplied separately. The Over Pressure Release Valve is bonded into the Top Cap, and the Diaphragm is bonded into the Housing .

Innovative technology provides easy attachment and adjustment

1) OVER PRESSURE RELEASE VALVE

The silicone over pressure release valve positioned in the top cap allows the valve to open in an over pressure situation, like during coughing.

2) TOP CAP

The plastic valve top cap allows for adjustment of the valves closing pressure by rotating it to change the position of the valve seat.

3) DIAPHRAGM (Bellows)

The silicone diaphragm which is bonded into the housing is of bellows type construction and expands with increased closing pressure.

4) HOUSING

The plastic circular housing is designed to be attached to the special occlusion cap for use with the **Trachi-Naze** system and not required with **Trachi-Naze+Plus** as it snap fits directly into the filter cassette.

5) SPECIAL OCCLUSION CAP

The two material occlusion cap consists of a rigid plastic outer over which is over moulded with a soft elastomer to give a flexible seal around the collar of the baseplate.



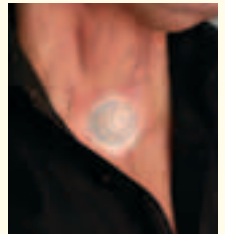
To see the full range of benefits the **Trachi-Naze** system offers please request our comprehensive **Trachi-Naze** brochure.

The **Trachi-Naze** Hands Free Valve is designed to be easily attached and removed from both the **Trachi-Naze** baseplate system (below) and the **Trachi-Naze Plus** stud system (right).

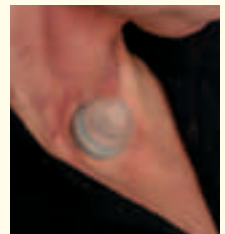


The **Trachi-Naze** Hands Free Valve features many benefits for the user:

- ✓ No replacement parts - easy to clean and maintain.
- ✓ Cough release valve - to release build up of pressure.
- ✓ Ratchet/click adjustment stops to highlight the desired setting.
- ✓ Low profile - discreetly worn under clothing and cravats.
- ✓ The **Trachi-Naze** system provides the widest choice of baseplates and stoma studs - to give the highest opportunity of best fit. This is important to ensure airtight sealing to prevent air leakage around the valve - which could affect quality of speech.
- ✓ With the use of Kapi-Gel Spacers it may be possible to use the Hands Free Valve with **Trachi-Naze Plus** laryngectomy tubes.
- ✓ No other system restores so many benefits to neckbreathers.



Attachment of the Hands Free Valve to to **Trachi-Naze** baseplate system is simple by way of a push fit occlusion cap.



With **Trachi-Naze Plus** the hands Free Valve simply clicks onto the stoma stud

Trachi-Naze...the complete system for effective respiratory rehabilitation.

Full comprehensive information on all aspects of the Trachi-Naze and Trachi-Naze Plus System is contained within our specialist brochure and website

Prescription Information

- Trachi-Naze and Trachi-Naze Plus filter cassettes along with Baseplates and Trachi-Naze Plus Stoma Studs (non-adhesive baseplates) are available on NHS prescription.
- An application has been made to the Department of Health for the Trachi-Naze Hands Free Valve to be on NHS prescription.



ISO 9001 : 2000
ISO 13485
Cert. 257

© Kapitex Healthcare Ltd. 2004

Due to continuous product developments it may be necessary to alter without notice products within our range. We endeavour to keep all customers informed of product improvements.

* International patents pending.

PBLA0029B 10/04

Head Office:

Kapitex Healthcare Ltd., Kapitex House, 1 Sandbeck Way, Wetherby, West Yorkshire LS22 7GH England Tel: +44(0)1937 580211 Fax: +44 (0)1937 580796 Email: sales@kapitex.com Website: www.kapitex.com



KAPITEX
The Specialists in Laryngectomy, Tracheostomy, Dysphagia and Airway Management

www.kapitex.com